

CERTIFICATE OF LOCATION OF GOVERNMENT CORNER

County of Anoka

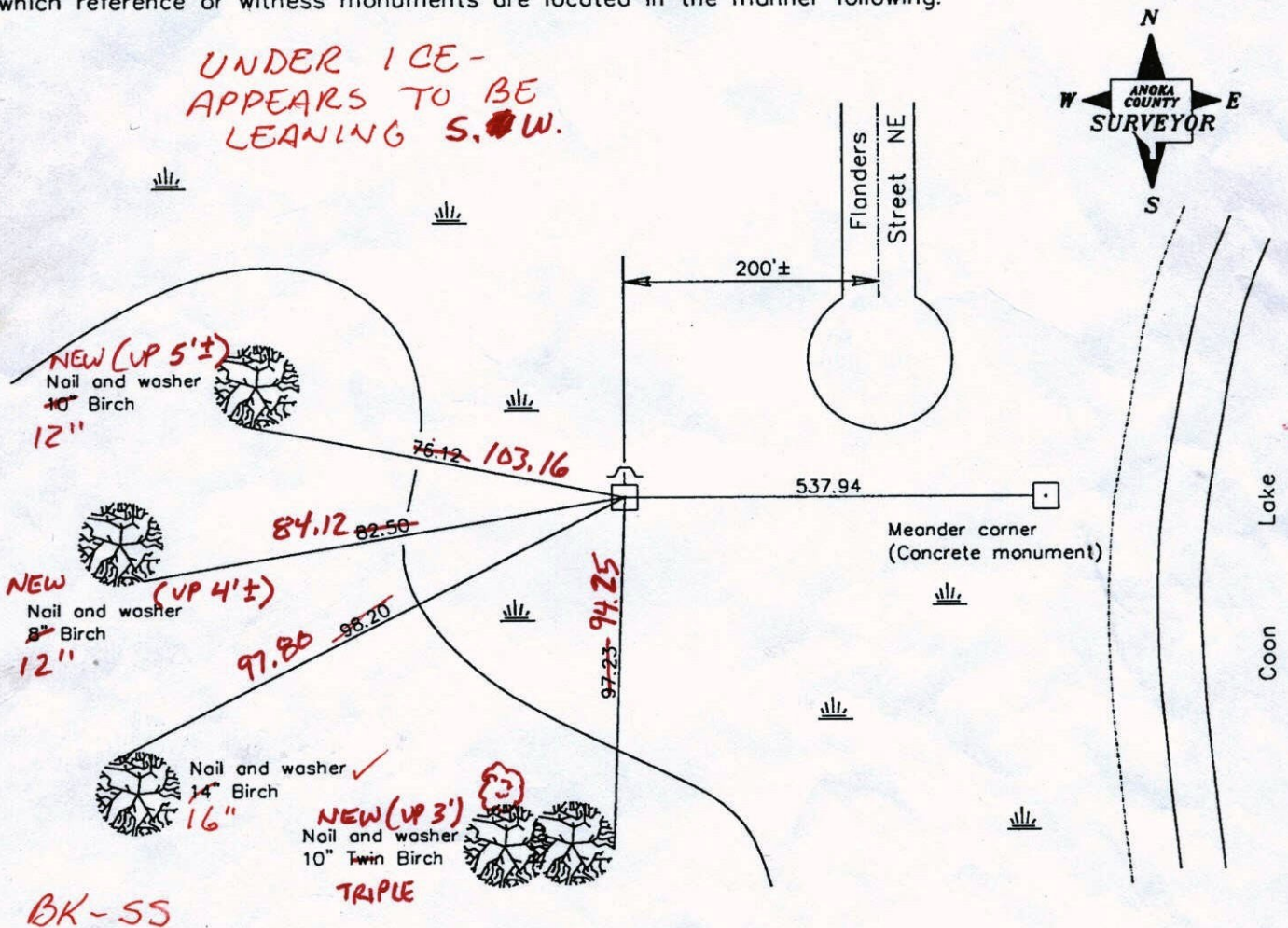
State of Minnesota

North 1/4 Corner of Sec. 3 Township 32 Range 23

I hereby certify that on the 22nd day of December, 1960, I found the described corner which was evidenced by a concrete monument

and I further certify that to perpetuate the location of said corner, I did, at the exact location thereof, place a permanent marker consisting of a concrete monument with sign and post on the north side (MON. & SIGN LEANING SW'LY 0.5' ±)

which reference or witness monuments are located in the manner following:



Revised date

| |
|----------|
| Wet 1987 |
| 2/21/02 |
| 3-17-11 |
| 3-6-12 |

T/H

N.A.D. 1983 Coordinates
(1996 adjustment)

| County Project Coordinates | State Plane Coordinates |
|-----------------------------|-------------------------|
| Northing <u>195689.9500</u> | Y _____ |
| Easting <u>518862.6753</u> | X _____ |

Date 2/21/02

CERTIFICATE OF LOCATION OF GOVERNMENT CORNER

County of Anoka

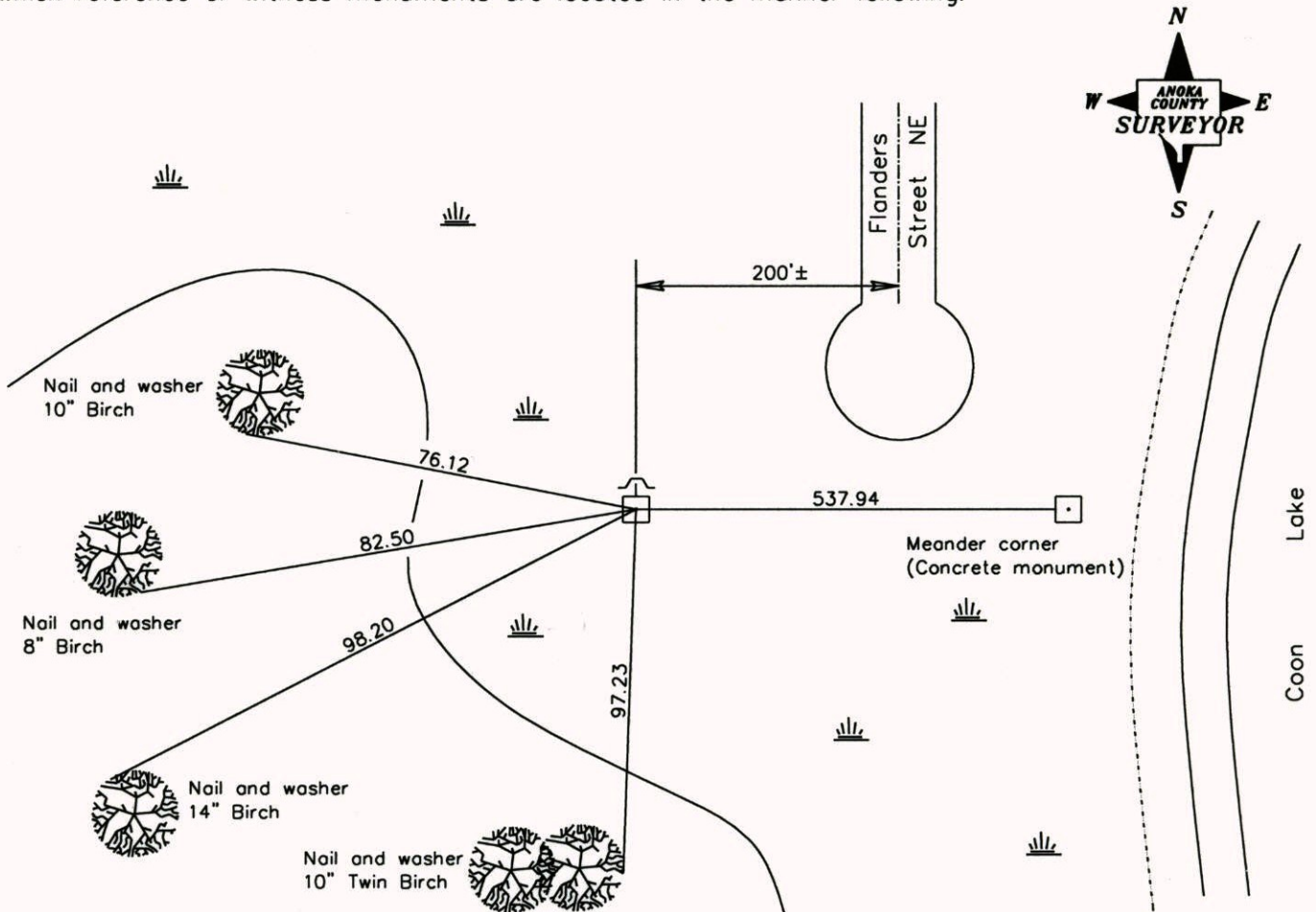
State of Minnesota

North 1/4 Corner of Sec. 3 Township 32 Range 23

I hereby certify that on the 22nd day of December, 1960, I found the described corner which was evidenced by a concrete monument

and I further certify that to perpetuate the location of said corner, I did, at the exact location thereof, place a permanent marker consisting of a concrete monument with sign and post on the north side

which reference or witness monuments are located in the manner following:



Revised date

| |
|----------|
| Wet 1987 |
| 2/21/02 |
| |
| |
| |

N.A.D. 1983 Coordinates
(1996 adjustment)

| County Project Coordinates | State Plane Coordinates |
|---|-------------------------|
| Northing <u>195689.9500</u> Easting <u>518862.6753</u> | Y _____ X _____ |

Date 2/21/02

CERTIFICATE OF LOCATION OF GOVERNMENT CORNER

County of Anoka

State of Minnesota

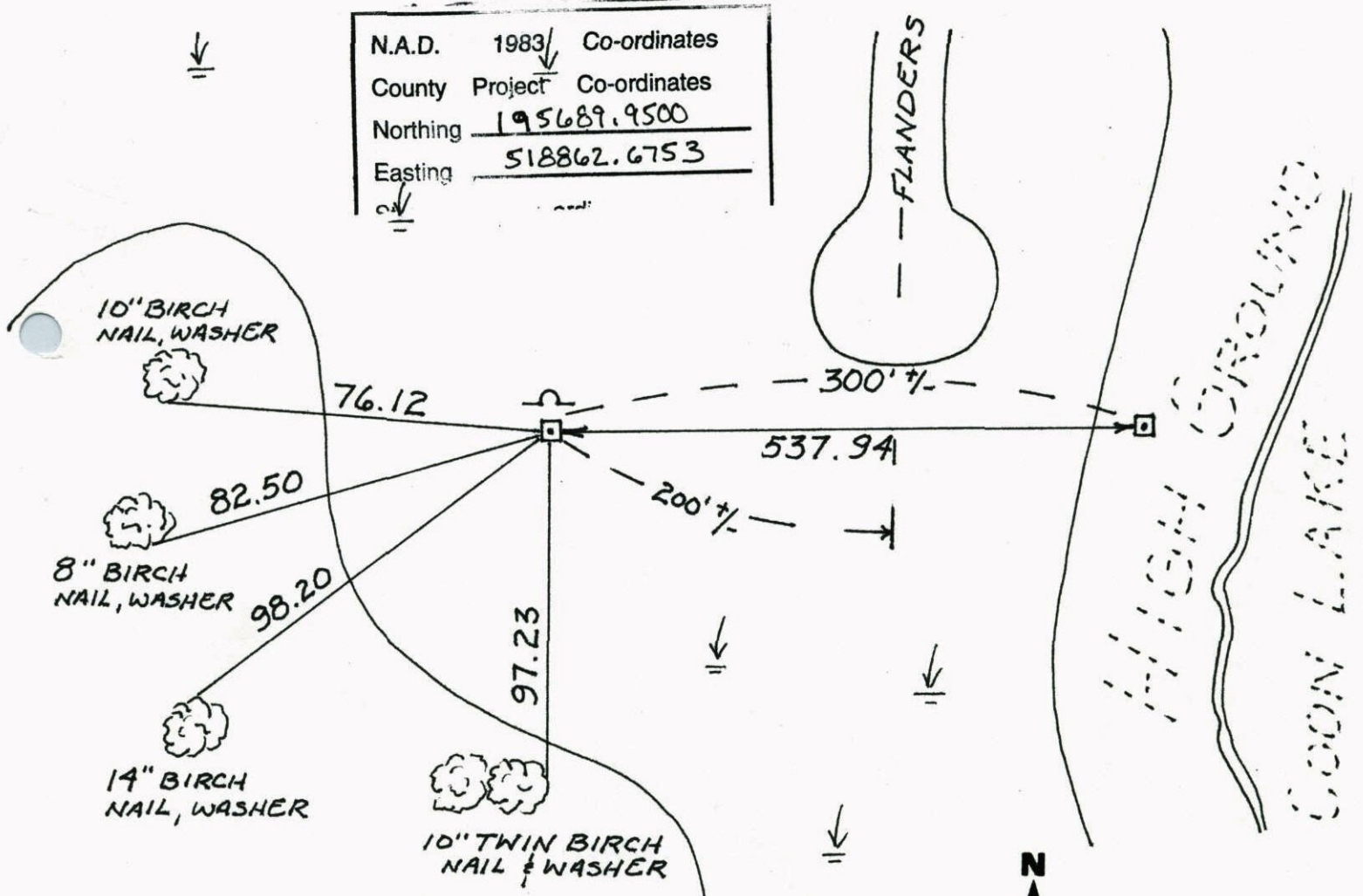
NORTH $\frac{1}{4}$ Corner of Sec. 3 Township 32 Range 23

I hereby certify that on the 22 day of DEC., 1960, I found the described corner which was evidenced by CONCRETE

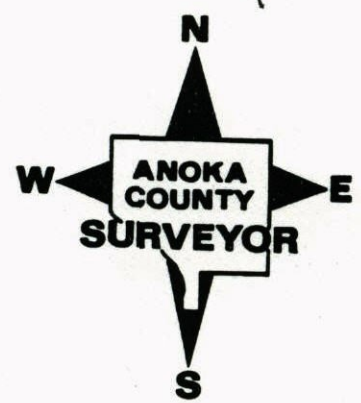
and I further certify that to perpetuate the location of said corner, I did, at the exact location thereof, place a permanent marker consisting of SAME ; SIGN AND POST ON NORTH

which reference or witness monuments are located in the manner following:

| | | |
|----------|--------------------|--------------|
| N.A.D. | 1983 | Co-ordinates |
| County | Project | Co-ordinates |
| Northing | <u>195689.9500</u> | |
| Easting | <u>518862.6753</u> | |

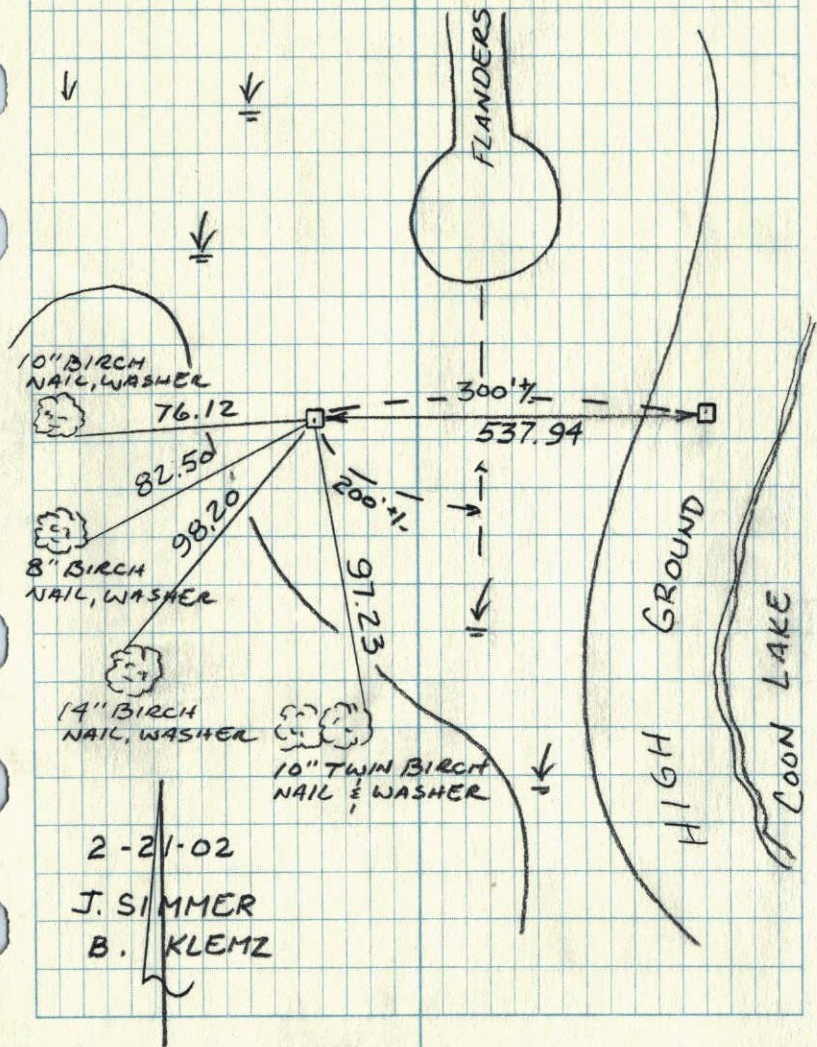


| Revised date | Revised date | Revised date |
|--------------|--------------|--------------|
| WET '87 | | |
| 2-21-02 | | |
| | | |
| | | |
| | | |
| | | |



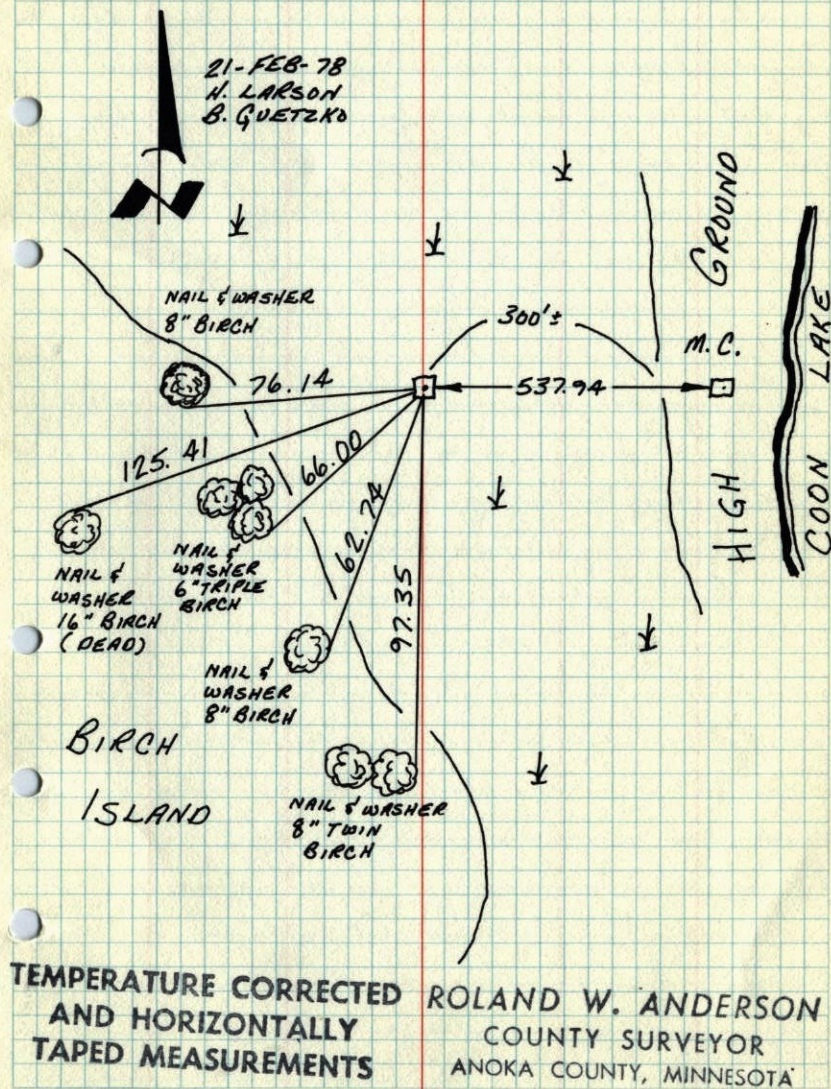
4
NORTH 1/4 SEC. 3 T32 R23

GPS AND RETIED CONC. MON.



4
N 1/4 COR. SECTION 3 - T32 - R23

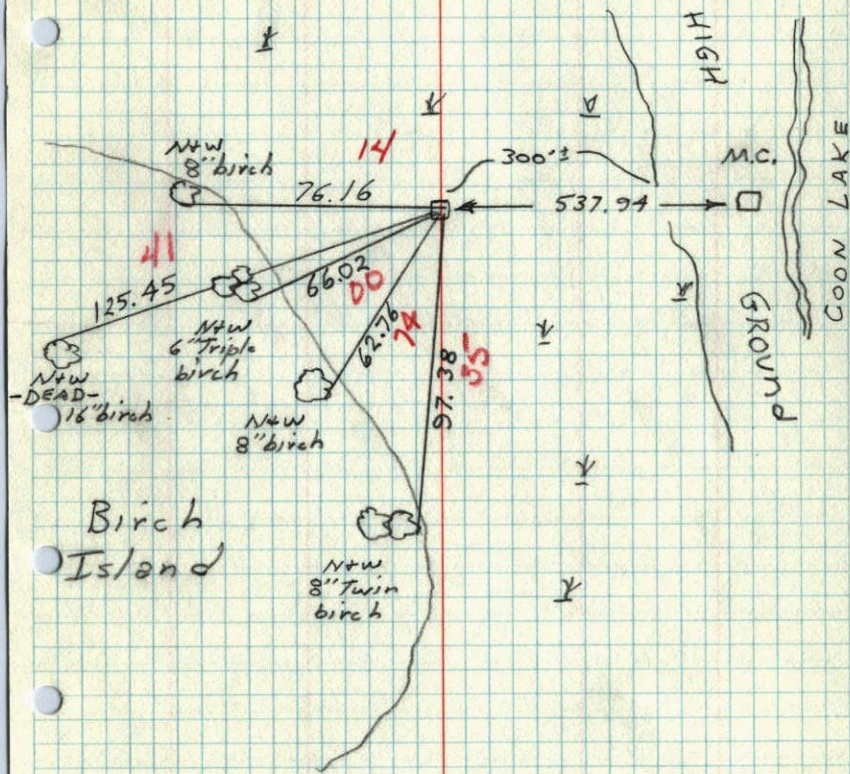
RETIED CONCRETE MONUMENT FOUND BY FREEMAN IN 1960. FOUND CONCRETE BROKEN OFF. ALL BUT ONE TIE GONE.



N $\frac{1}{4}$ Cor. Section 3 T32 R23

Retired concrete monument found
by Freeman in 1960. Found concrete
broken off all but one tie gone.

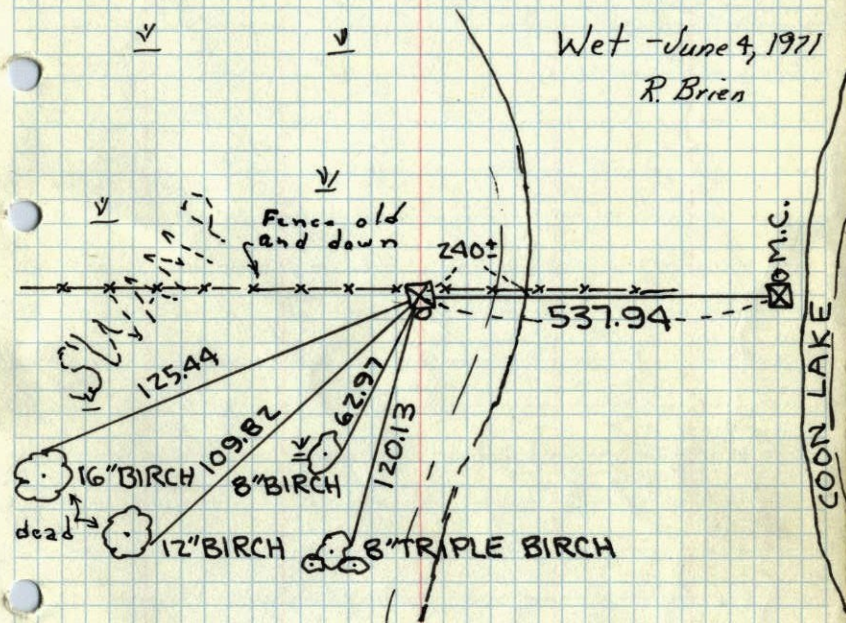
* 8 25"
2-21-78
H. Larson
B. Guetzko



4

N $\frac{1}{4}$ COR. SEC. 3 T. 32 R. 23

CONC. MON. IN SWAMP - 10' S. OF
E. & W. FENCE - SET IRON PIPE ON S.
SIDE & FLUSH WITH MON.



Wet - June 4, 1971
R. Brien

DEC. 22, 1960

R. FREEMAN
M. O. ANDERSON

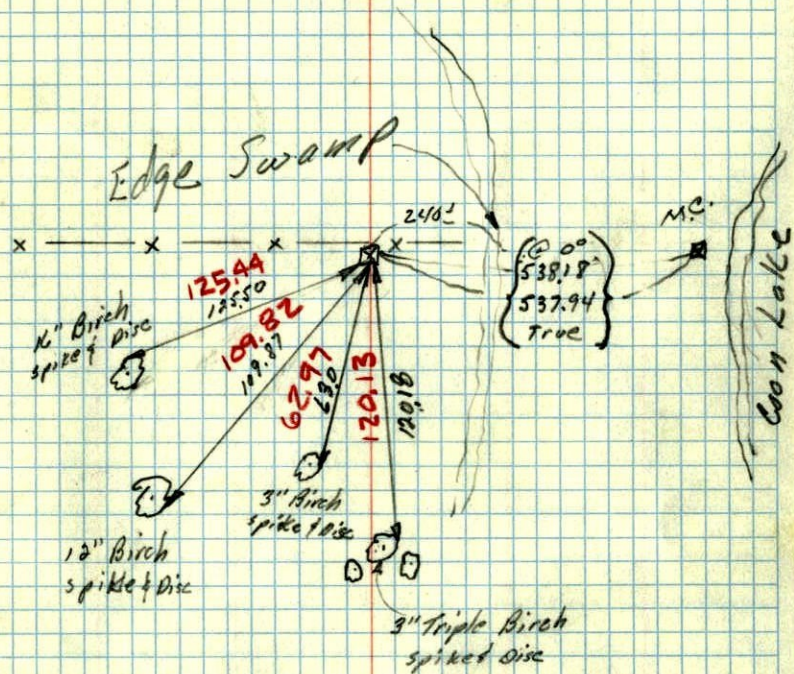
TEMPERATURE CORRECTED
AND HORIZONTALLY
TAPED MEASUREMENTS

Checked
1-21-74
H. Larson

ROLAND W. ANDERSON
COUNTY SURVEYOR
ANOKA COUNTY, MINNESOTA

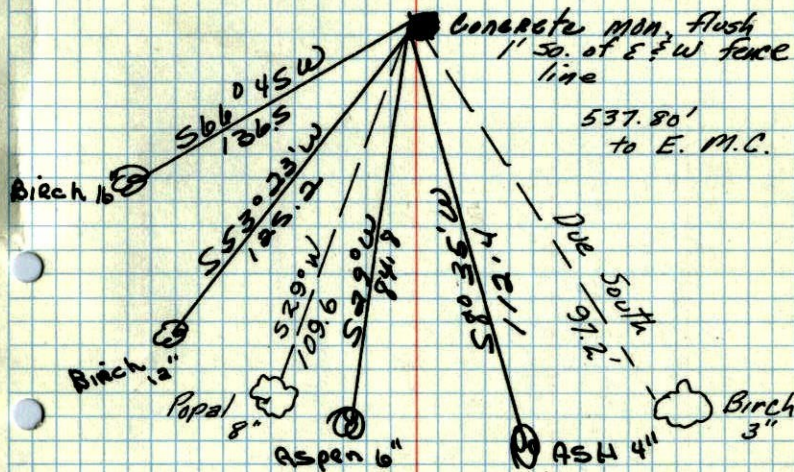
22 Dec 1960
 Freeman Anderson
 -2°

N¹/₂ Cor. Sec. 3-32-23 (Horn Lake)
 Found Conc. Mon. Flush - 1.0' S. of
 E & W fence. Set iron pipe on So. side
 Mon. (In Swamp)



TEMP CORRECTED
 for -2°

3 ✓
 N¹/₄ Cor. of Sec 3 T 32 R 23
 Conc. Mon.



ties to red head in face of trees

Oct. 10, 1944
 Cartwright

N¹/₄ Cor. of Sec 3 T 32, R 23

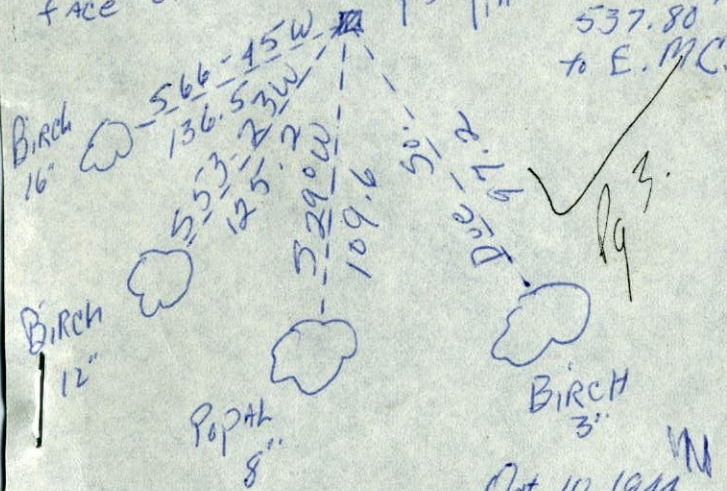
Retied by Conc. Man.

Wennis CARLSON

All tie to
Red heads in
face of tree

Conc. Man. flush
150. of E&W Fence
line

537.80'
to E.M.C.



Oct 10, 1944
CARTWRIGHT